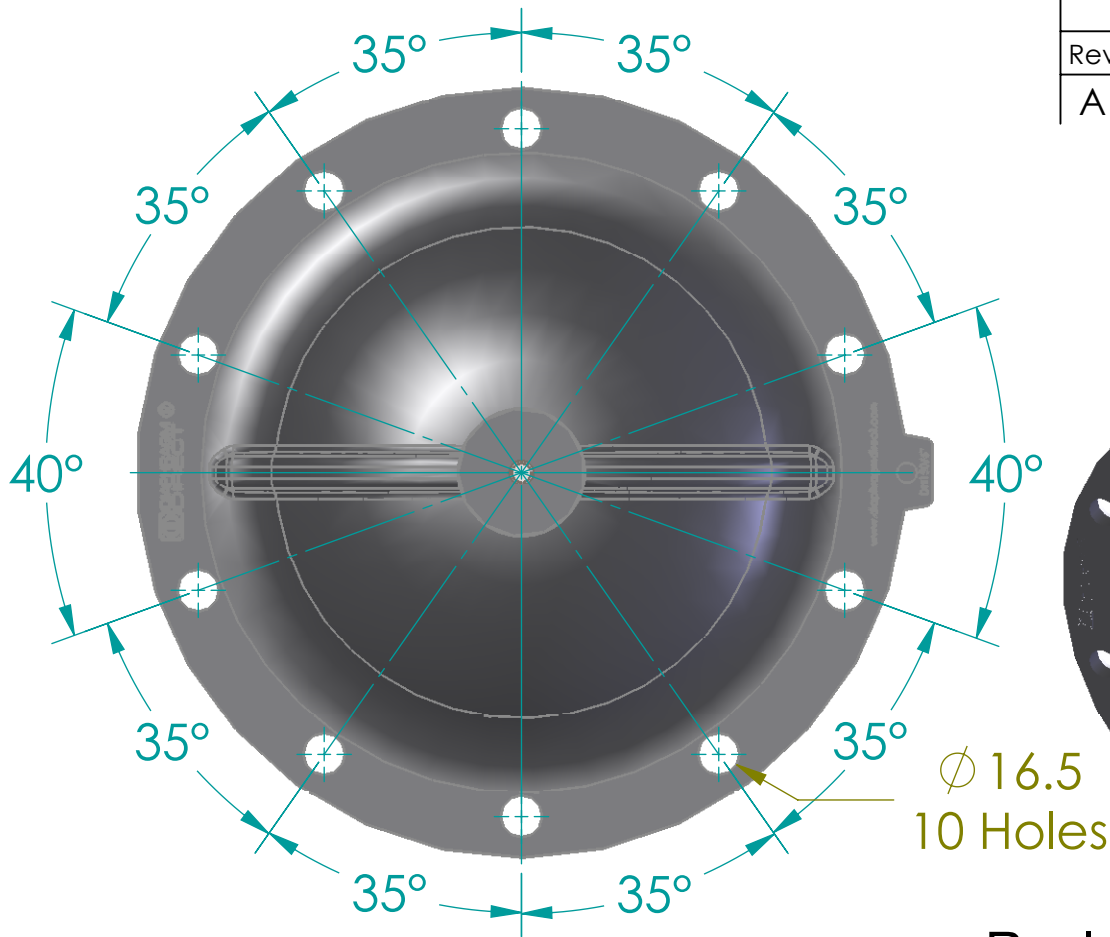


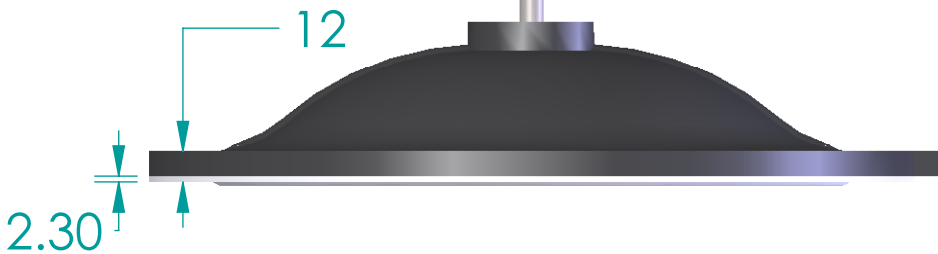
Revision History

Rev	Description	Date	Approved
A	New Drawing & OEM No.	23/09/24	JB




Ø 16.5
10 Holes

5/16"-18 UNC (INSERT SCREW)



Replacement Diaphragm for:-
OEM PART NUMBER = 600150M5Q
USED ON 6"(DN150) Diaphragm Valve

	Name	Date	 DIAPHRAGM DIRECT
Drawn	M.Mc Keon	23/09/24	
Checked			TITLE DD60-GTFM
Material - EPDM BACKING TFM-DIAPHRAGM Complies with CFR 177.2600 and Conforms to USP Class VI Biological Reactivity Tests Section #87 and #88			Size A FOOT PRINT DIMENSIONS Rev A
File: DD60-GTFM			
SCALE: 1:3 mm			Sheet 1 of 1

Disclaimer - Diaphragm Direct® does not manufacture, represent, nor sell OEM valves or diaphragms manufactured by any other company. Diaphragm Direct® brand diaphragms are not sponsored by any other manufacturers. Any name, model, part number, brand, image, material or referral is for descriptive purposes only. Diaphragm Direct® brand replacement diaphragms are guaranteed to fit OEM equipment and meet or exceed OEM specifications. Diaphragm Direct® brand replacement diaphragms are covered by the standard Diaphragm Direct® limited product warranty.